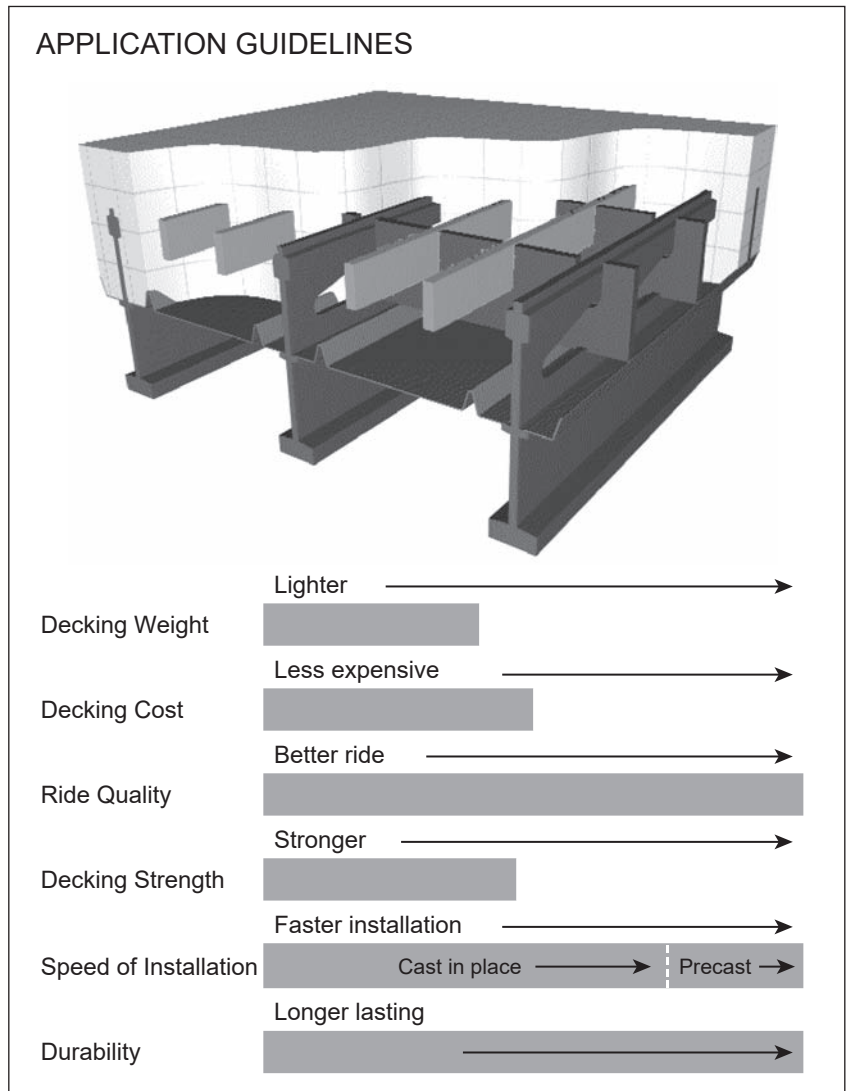


5" RB half-filled grid products are available with a variety of bar spacings, typically ranging from 6" c/c to 10" c/c, but can be more or less depending on the required loading and support spacing. Different configurations allow the designer to match the strength of the decking to the requirements of the application. The 5" RB 6.2 has grid main beams at 6" c/c and two supplemental bars.

Because this grid is half filled with concrete it is significantly lighter than a common rebar reinforced slab and most fully filled grids. The concrete provides a smooth, quiet, non-skid riding surface. Supplemental bars that run parallel with the grid main beams are added to help balance out the section properties of the deck.

Grids can be made fully composite with supports and can accommodate complex deck geometry, cross-slopes and super-elevation. Speed of construction, high strength to weight ratio and excellent long term durability make these grid systems an excellent product choice.



**5" RB 6.2 Half-Depth • HS 25 Load Table**

Main Bar Spacing (in)	Minimum Sectional Properties (in <sup>3</sup> /ft)						Maximum Continuous Clear Span (ft)				Approximate Weight (lbs/sf) Incl 1 1/2 Overfill	
	Steel Only		Composite Section				Transverse		Parallel		Steel Only	Steel & 144#ft <sup>3</sup> Conc
	Top Steel	Bottom Steel	Positive		Negative		A36	A588	A36	A588		
			S <sub>CONC</sub>	S <sub>STEEL</sub>	S <sub>TOP</sub>	S <sub>BOTTOM</sub>						
6	5.84	5.47	94.07	7.76	5.84	5.51	10.1	10.1	7.8	10.1	21.3	66.4

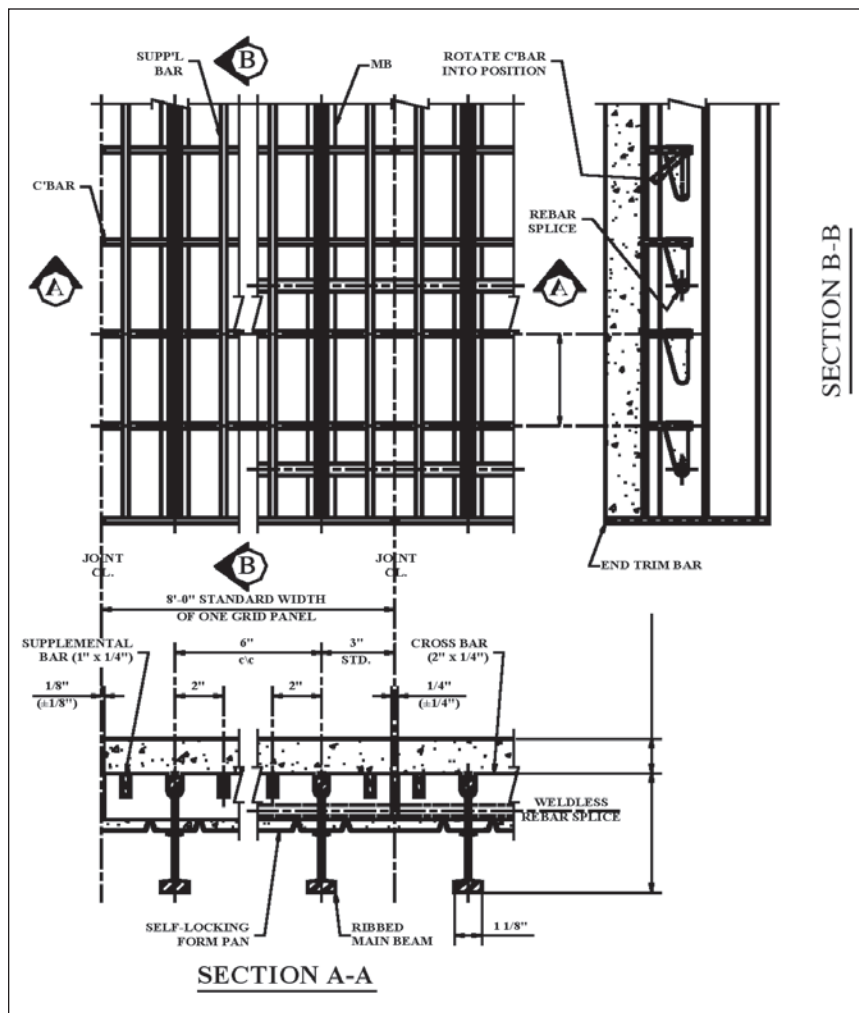
NOTE: The information contained herein has been prepared in accordance with generally accepted engineering principles. However, L.B. Foster Company is not responsible for any errors that may be contained herein. The user of the information provided herein should check the information supplied and make an independent determination as to its applicability to any particular project or application.

## Typical Specification

The steel grid bridge flooring shall be 5-Inch RB 6.2 Half-Filled as manufactured by the L.B. Foster Company, 415 Holiday Drive, Pittsburgh, Pennsylvania 15220 – Phone (412) 928-3455. The deck shall be manufactured from the following steel elements:

Main Beam (MB) @ 6" c/c	5 <sup>3</sup> / <sub>16</sub> " deep special rolled beam x 5.6#/LF
Cross Bar (C'Bar) @ 4" or 8" c/c	2" x 1/4" flat bar
Supplemental Bar (2 between each MB)	1" x 1/4" (minimum) flat bar
Steel Specification	All steel shall be 50 ksi (A709 Gr. 50 / A-572) or 50 ksi weathering (A709 Gr. 50W / A588)

### Typical Details: 5-Inch RB 6.2 Half-Filled



Request manufacturer's standard 4 part product specification for inclusion with project documents.

The decking shall consist of panels fabricated in maximum standard widths of 8'-0". Narrower units shall be furnished when required at slab end, transverse joints, or along edges of slabs adjacent to curbs. The deck shall be assembled such that the tops of all elements are in the same plane and notching of the main bar top flange shall not be permitted.

The grid shall be welded using the manufacturers standard welding process.

Finish: Most types of coatings can be provided; common finishes are mill finish (for 50 ksi weathering steel) and hot dipped galvanized for 50 ksi steel-note that distortion from galvanizing will occur, request manufacturer's tolerances.